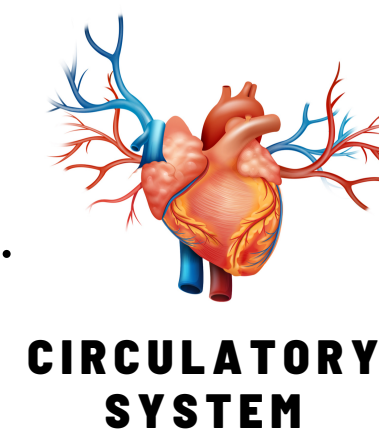
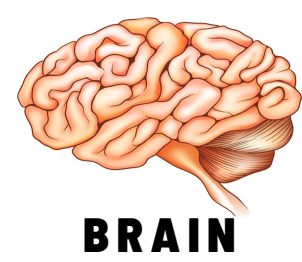


ORGANIZATIONAL TEMPERATURE GAUGE

1. PSYCHOLOGICAL SAFETY

- INCLUSION SAFETY
- LEARNER SAFETY
- CONTRIBUTOR SAFETY
- CHALLENGER SAFETY

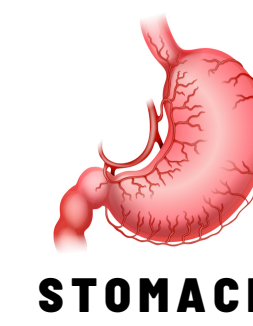
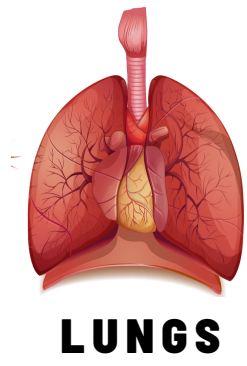


2. EMOTIONAL INTELLIGENCE

- SAFE AWARENESS
- SELF MANAGEMENT
- SOCIAL AWARENESS
- RELATIONSHIP MANAGEMENT

3. CULTURAL INTELLIGENCE

- DIVERSITY & INCLUSION
- ATTITUDE
- BUILD COMMUNITY

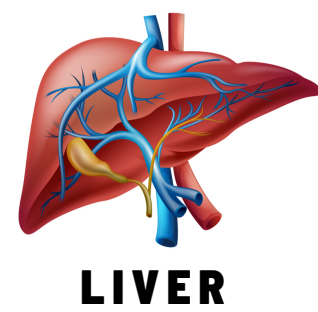


4. ETHICAL LEADERSHIP: EVERY LEVEL

- RESPECT OTHERS
- SERVE OTHERS
- SHOW JUSTICE

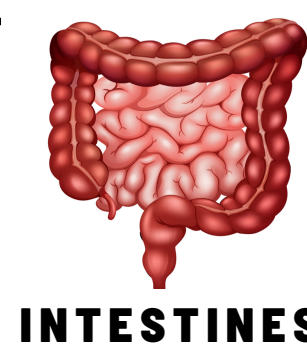
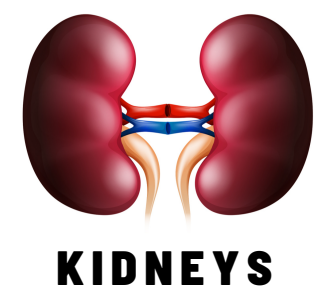
5. COURAGEOUS CULTURE

- LEADING THE ENVIRONMENT
- SHAPING THE CULTURE
- MANAGING TRANSITIONAL CHANGE
- CREATE CLARITY
- CULTIVATE CURIOSITY
- RESPOND WITH REGARD
- PRACTICE PRINCIPLE
- GALVANIZE THE GENIUS



7. EMPLOYEE WELLNESS

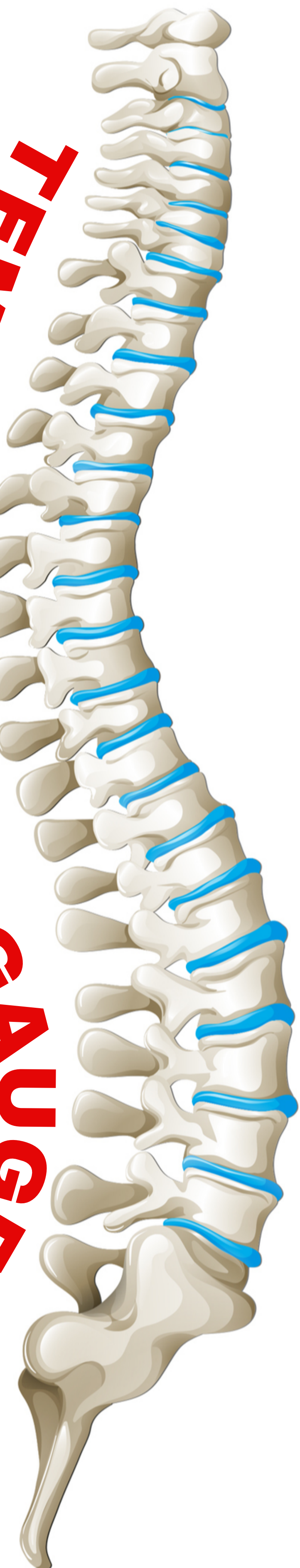
- RESILIENT BADGE
- MENTAL MODEL OF RESILIENCE
- STRESS MANAGEMENT



6. CONFLICT RESOLUTION

- DRAMA TRIANGLE
 - VICTIM
 - PERSECUTOR
 - RESCUER
- VULNERABILITY
- RESOURCEFUL
- PERSISTENT

TEMPERATURE GAUGE



7 VITAL ORGANS FOR SYSTEM SURVIVAL:

- BRAIN
- CIRCULATORY SYSTEM
- LUNGS
- STOMACH
- LIVER
- INTESTINES
- KIDNEYS

